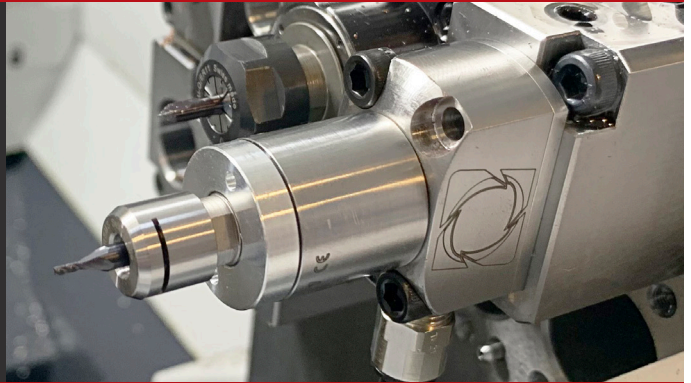


# 60,000/80,000 RPM ON YOUR SWISS LATHE THE NEW 800LT

Our 800LT operates 24/7 accelerating your production.

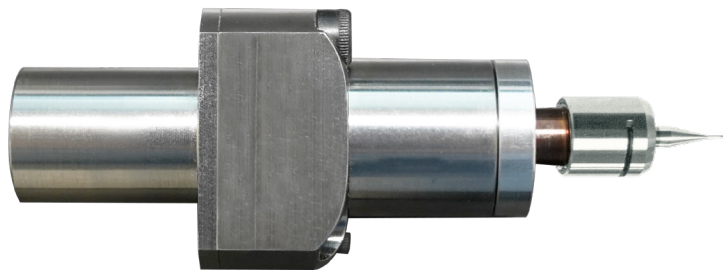
This powerful patented motor increases airflow to match cutting load maintaining your rated speed in cut.

Air Turbine Motors® are low friction direct drives with only 2 moving parts resulting in no heat and great reliability.



## Patented Governor Control Maintains 60,000/80,000 RPM in Cut

Get 5 x faster production with this mini motor from Air Turbine Motors®



19.5, 20, 22 and 25mm Outside Diameters available to fit all Swiss Automatics.

- ▶ No control system, no lubricator, no gears or high frequency brushes to burn up.
- ▶ Direct Drive Reliability.
- ▶ Just connect 90 PSI, 6.2 Bar dry clean air supply and mill on any Swiss Automatic.



**+1 561 994 0500 - +49-1716513614**

View 40 Air Turbine Motors® at [www.airturbinetools.com](http://www.airturbinetools.com)

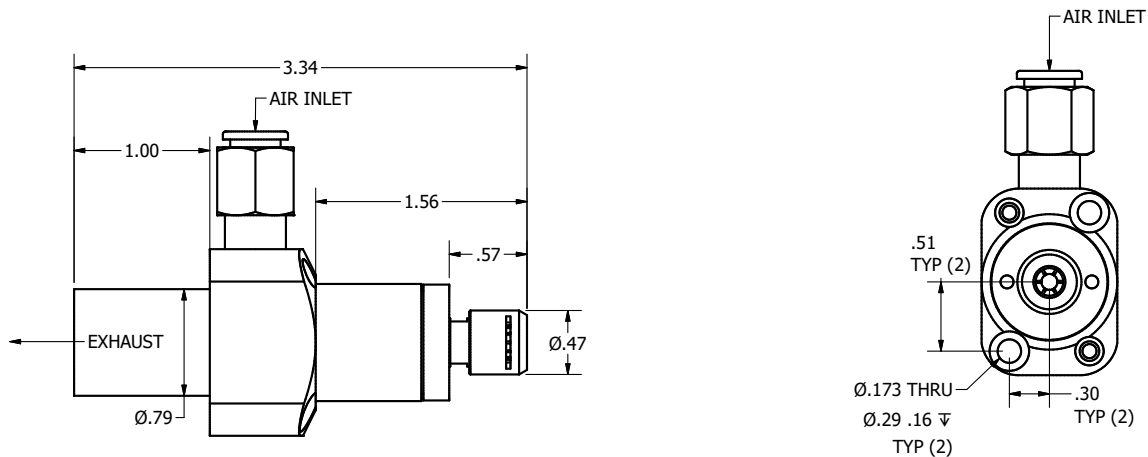
[info@airturbinetools.com](mailto:info@airturbinetools.com) | +1 561 994 0500 | +49-1716513614 | [www.airturbinetools.com](http://www.airturbinetools.com)

All specifications approximate. Patents issued and pending. © 2021 Air Turbine Technology, Inc. All rights reserved.

# 60,000 / 80,000 RPM FOR FASTER SWISS AUTOMATIC PRODUCTION

Just 8.4mm(3.37") long - the 800LT packs a punch.  
Our patented governor increases CFM/LS airflow under load so you keep constant speed in cut.

## 800LT SPECIFICATIONS



19.5, 20, 22 and 25mm Outside Diameters to fit all available Swiss Automatics. Specify brand and OD when ordering

General Specifications	800LT
Governed Speed RPM	60,000/80,000
Power Rating hp (kW)	0.2 (0.15)
Inlet Air Pressure	90 PSI (6.2 Bar)
Air Consumption Idle cfm (l/s)	3.5
Air Consumption Working Flow cfm (l/s)	5
Sound Level	Less Than 78 dBA
Max Shank Capacity	ER 8 - 1/8" (3mm)
Motor Weight	5.6 oz (0.158 kg)

Standard Equipment
Combo filter regulator (p/n #30001), collet, wrenches, hose, fittings and carrying case.
ER 8 UP collet system (1/8" or 3mm collet standard - other sizes optional).
Oil free 90 psi / 6.2 bar clean, dry air supply required.
The 800LT is for use with tools up to 0.1mm / 0.039".

## INSTALLATION

Secure the body of the motor in your gang tool or boring bar holder. Connect a dry clean 90PSI - 6.2 Bar air supply station using couplings, connectors and hoses at least 6 mm - 1/4" internal diameter. Install filter included on the air line to assure clean air. No control system, wiring or lubrication.



**+1 561 994 0500 - +49-1716513614**  
View more Air Turbine Motors® at [www.airturbinetools.com](http://www.airturbinetools.com)

[info@airturbinetools.com](mailto:info@airturbinetools.com) | +1 561 994 0500 | +49-1716513614 | [www.airturbinetools.com](http://www.airturbinetools.com)

All specifications approximate. Patents issued and pending. © 2021 Air Turbine Technology, Inc. All rights reserved.