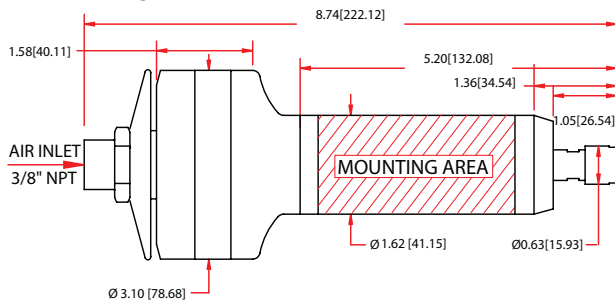
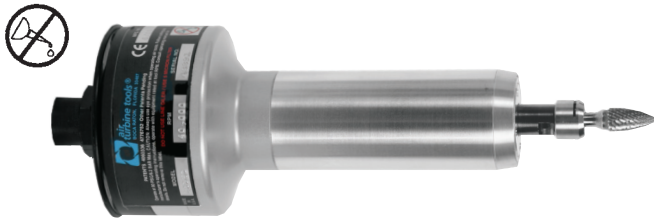


Standard double front ceramic bearings, an ER-11 collet, and a rigid steel barrel for mounting make the 430HD ideal for cutting harder materials. Efficient air consumption and durable direct drive governed motor make this unit a high speed workhorse.

Model 430HD



0.88 hp
0.66 kW



1/4"		6mm	
Speed	Part #	Speed	Part #
25,000 rpm	34420	25,000 rpm	34421
30,000 rpm	34430	30,000 rpm	34431
40,000 rpm	34440	40,000 rpm	34441

Weight: 39.9 oz / 1.13 kg

Standard Equipment: Rego-Fix® Collet System, 1/4" or 6mm ER-11 collet, collet wrenches, rear exhaust, and 3/8" NPT air supply fitting. Ceramic bearings standard. Oil free 90 psi/6.2 bar dry, clean air supply required. Angular contact bearing option available.

General Specifications	 430HD 		
Speed RPM	25,000	30,000	40,000
Power Rating HP (KW)	.76 (.57)	.83 (.62)	.88 (.66)
Inlet Air Pressure	90 PSI (6.2 Bar)		
Air Consumption-Idle cfm (L/s)	13 (6.10)	14 (6.60)	14 (6.60)
Air Consumption-Working cfm (L/s)	14 (6.61) - 35 (16.52)		
TIR Collet Held Shank	Less than .001" (.03mm)		
Sound Level	Less than 67 dBa		
Standard Shank Capacity	1/4" (6mm)		

Accessories

High Flow Filter	30004
High Flow Filter / Regulator	30003
Coolant Guard	11060
Carrying Case	11300
Ceramic Bearings	31101

