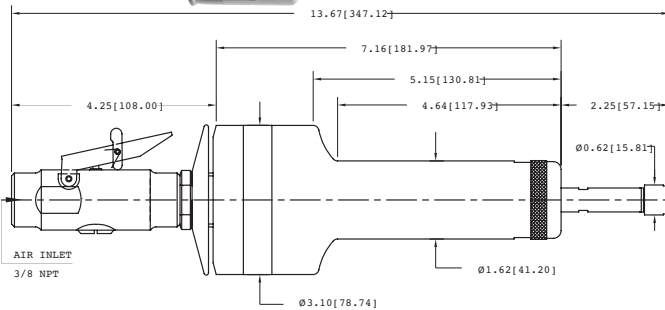
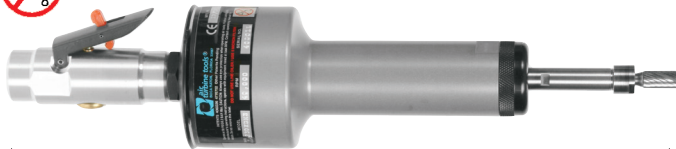


Great power is maintained by Air Turbine Tools® patented governor with extended reach to clean welds and work in cavities. The **230XDME** is comfortable and safer with low vibration and weight. This also provides constant high cutting speed which is cleaner. Noise under 67dBa enables the operator to work with less stress. With no vanes to vibrate or lubricate, the 230XDME cuts repair costs and eliminates oil lubrication.

Model 230XDME

1.3 hp
0.98 kW





1/4"	
Speed	Part #
25,000 rpm	52770
30,000 rpm	52772

6mm	
Speed	Part #
25,000 rpm	52771
30,000 rpm	52773

Weight : 42.4 oz / 1.20 kg

Standard Equipment Included: 1/4" or optional 6mm collet, collet wrenches, rear exhaust, trigger switch and 1/4" NPT air supply fitting. Oil free 90 psi / 6.2 bar dry, clean air supply required. **Optional collets page 49.** Use minimum diameter 3/8 / 9mm hose and couplings, on this unit.

General Specifications	 230XDME 	
Speed RPM	25,000	30,000
Power Rating HP (KW)	1.2 (0.90)	1.3 (0.98)
Inlet Air Pressure	90 PSI (6.2 Bar)	
Air Consumption-Idle cfm (L/s)	16 (7.55)	17 (8.02)
Air Consumption-Working cfm (L/s)	19 (8.98) - 30 (14.16)	
TIR Collet	Held Shank Less than .001" (.03 mm)	
Sound Level	Less than 67 dBa	
Standard Shank Capacity	1/4" (6mm)	

Accessories	Part#
High Flow Filter	30004
High Flow Filter / Regulator	30003
5' Air Supply Assembly	30010